

Halogen High Voltage DE



7786R 1000W R7s 240V 1CT

The high, constant light output and consistent color temperature of these double ended high voltage halogen lamps ensure attractive, accurately exposed pictures for both film and video. In addition, the wide choice of dimensions and power ratings opens new levels of creative freedom for the luminaire designer.

Product data

• General Characteristics

Philips Code	7786R
ANSI Code	-
LIF Code	P2/20
Cap-Base	R7s
Bulb Finish	Clear
Filament Shape	Single Coil
Operating Position	p15
Main Application	Entertainment
Life to 50% failures	300 hr

• Light Technical Characteristics

Color Temperature	3200 K
Technical	
Luminous Flux Lamp	30000 Lm

• Electrical Characteristics

Lamp Wattage	1000 W
Voltage	240 V
Dimmable	Yes
Rapid Acting HBC	6.3 V
Fuse	

• Luminaire Design Requirements

Pinch Temperature	400 (max) C
-------------------	-------------

• Product Dimensions

Base Face to Base	114.2 mm
Face A	
Overall Length C	117.5 (max) mm
Diameter D	11 (max) mm
Filament Length W	60 mm

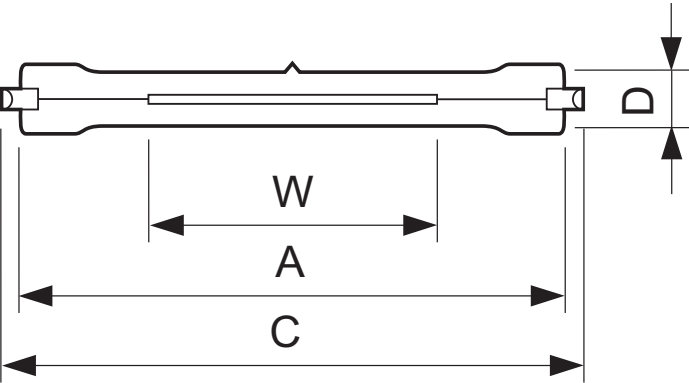
• Product Data

Order code	923884945701
Full product code	923884945701
Full product name	7786R 1000W R7s 240V 1CT
Order product name	7786R 1000W R7s 240V 1CT/10
Pieces per pack	1
Packing configuration	10
Packs per outerbox	10
Bar code on pack - EAN1	8711500492135
Bar code on outerbox - EAN3	8711500521927
Logistic code(s) - 12NC	923884945701
Net weight per piece	10.400 gr

Dimensional drawing

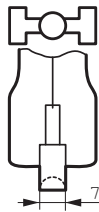
PHILIPS

Dimensional drawing



7786R 1000W R7s 240V 1CT

Product	A (Min)	A (Norm)	A (Max)	C (Max)	D (Max)	W (Norm)
7786R 1000W R7s 240V	-	114.2	-	117.5	11	60



R7s

