

# Halogen High Voltage DE



13989R 1000W R7s 240V 1CT

The high, constant light output and consistent color temperature of these double ended high voltage halogen lamps ensure attractive, accurately exposed pictures for both film and video. In addition, the wide choice of dimensions and power ratings opens new levels of creative freedom for the luminaire designer.

## Product data

### • General Characteristics

Philips Code	13989R
ANSI Code	EKM
LIF Code	P2/7
Cap-Base	R7s
Bulb Finish	Clear
Filament Shape	Single Coil
Operating Position	any
Main Application	Entertainment
Life to 50% failures	200 hr

### • Light Technical Characteristics

Color Temperature	3200 K
Technical	
Luminous Flux Lamp	26000 Lm

### • Electrical Characteristics

Lamp Wattage	1000 W
Voltage	240 V
Dimmable	Yes
Rapid Acting HBC	6.3 V
Fuse	

### • Luminaire Design Requirements

Pinch Temperature	400 (max) C
-------------------	-------------

### • Product Dimensions

Base Face to Base	185.7 mm
Face A	
Overall Length C	189.1 (max) mm
Diameter D	11 (max) mm
Filament Length W	120 mm

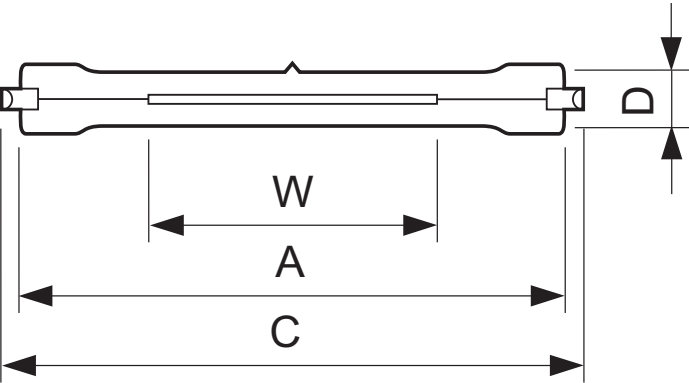
### • Product Data

Order code	923878045701
Full product code	923878045701
Full product name	13989R 1000W R7s 240V 1CT
Order product name	13989R 1000W R7s 240V 1CT/10
Pieces per pack	1
Packing configuration	10
Packs per outerbox	10
Bar code on pack - EAN1	8711500492036
Bar code on outerbox - EAN3	8711500521835
Logistic code(s) - 12NC	923878045701
Net weight per piece	15.900 gr

## Dimensional drawing

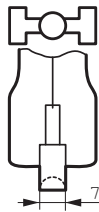
**PHILIPS**

Dimensional drawing



13989R 1000W R7s 240V 1CT

Product	A (Min)	A (Norm)	A (Max)	C (Max)	D (Max)	W (Norm)
13989R 1000W R7s 240V	-	185.7	-	189.1	11	120



R7s



© 2013 Koninklijke Philips N.V. (Royal Philips)  
All rights reserved.

Specifications are subject to change without notice. Trademarks are the property of Koninklijke Philips N.V. (Royal Philips) or their respective owners.

[www.philips.com/lighting](http://www.philips.com/lighting)

2013, August 16  
data subject to change