

Halogen High Voltage DE



6358R 1250W R7s 240V 1CT

The high, constant light output and consistent color temperature of these double ended high voltage halogen lamps ensure attractive, accurately exposed pictures for both film and video. In addition, the wide choice of dimensions and power ratings opens new levels of creative freedom for the luminaire designer.

Product data

• General Characteristics

Philips Code	6358R
ANSI Code	-
LIF Code	P2/12
Cap-Base	R7s
Bulb Finish	Clear
Filament Shape	Single Coil
Operating Position	p15
Main Application	Entertainment
Life to 50% failures	200 hr

• Light Technical Characteristics

Color Temperature	3200 K
Technical	
Luminous Flux Lamp	33750 Lm

• Electrical Characteristics

Lamp Wattage	1250 W
Voltage	240 V
Dimmable	Yes
Rapid Acting HBC	10 V
Fuse	

• Luminaire Design Requirements

Pinch Temperature	400 (max) C
-------------------	-------------

• Product Dimensions

Base Face to Base	185.7 mm
Face A	
Overall Length C	189.1 (max) mm
Diameter D	11 (max) mm
Filament Length W	120 mm

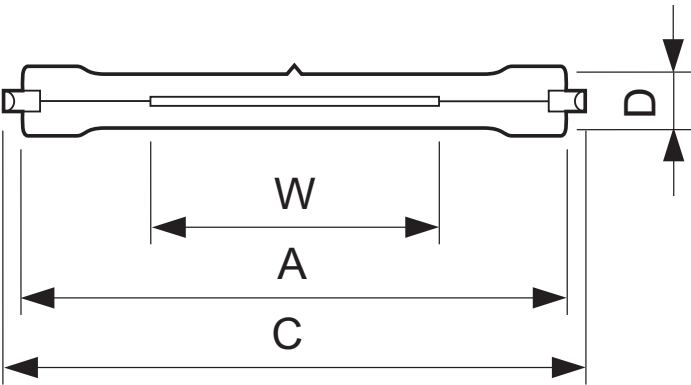
• Product Data

Order code	923878445701
Full product code	923878445701
Full product name	6358R 1250W R7s 240V 1CT
Order product name	6358R 1250W R7s 240V 1CT/10
Pieces per pack	1
Packing configuration	10
Packs per outerbox	10
Bar code on pack - EAN1	8711500492050
Bar code on outerbox - EAN3	8711500521859
Logistic code(s) - 12NC	923878445701
Net weight per piece	16.200 gr

Dimensional drawing

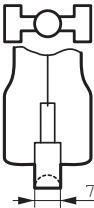
PHILIPS

Dimensional drawing



6358R 1250W R7s 240V 1CT

Product	A (Min)	A (Norm)	A (Max)	C (Max)	D (Max)	W (Norm)
6358R 1250W R7s 240V	-	185.7	-	189.1	11	120



R7s



© 2013 Koninklijke Philips N.V. (Royal Philips)
All rights reserved.

Specifications are subject to change without notice. Trademarks are the property of Koninklijke Philips N.V. (Royal Philips) or their respective owners.

www.philips.com/lighting

2013, August 16
data subject to change